

**FOX CANYON GMA BASIN MANAGEMENT OBJECTIVES REPORT CARD
OXNARD PLAIN FOREBAY
2014**

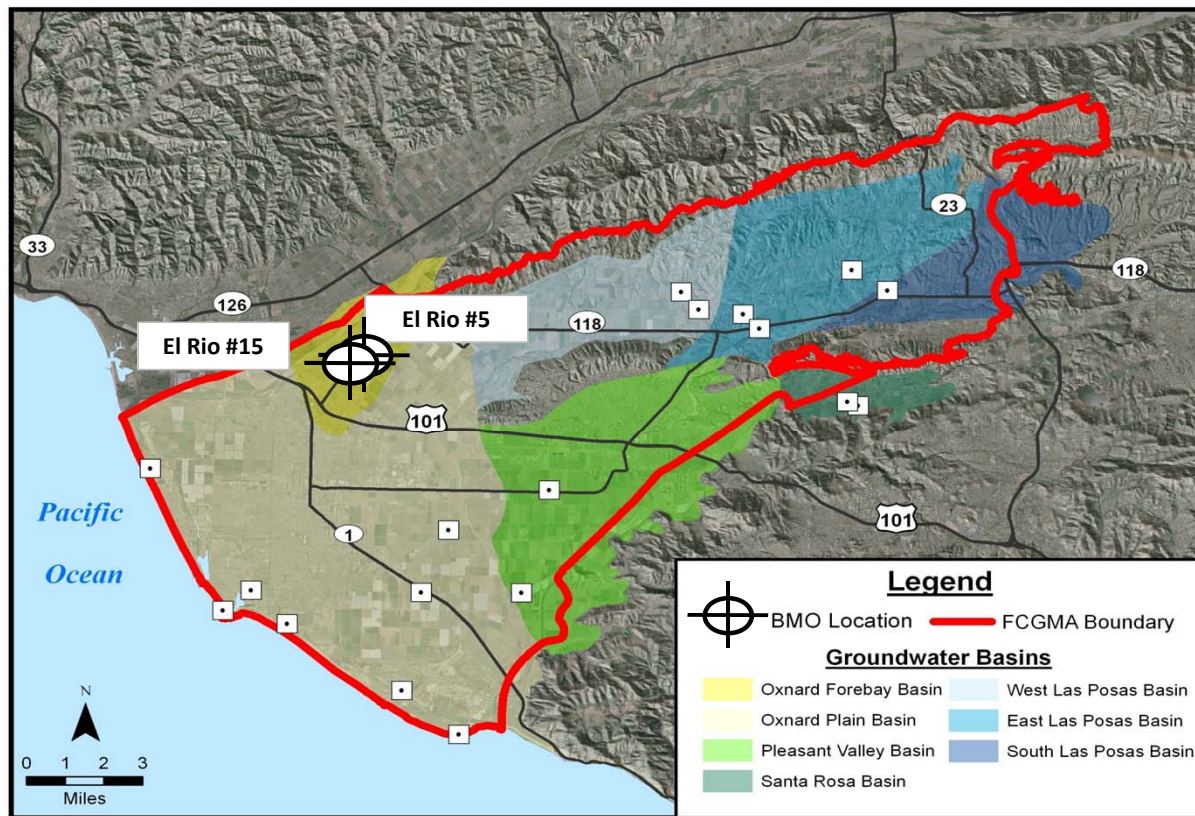
Goal: Protect water quality at public drinking water wells (nitrate and TDS) and irrigation suitability (TDS). (Note TDS = total dissolved solids)

BMOs: Nitrate Concentration: 22.5 mg/L-NO₃ (50% of State of California MCL)
TDS Concentration: 1,200 mg/L (LARWQCB Basin Plan Objective)

Status Summary: In 2014, average nitrate concentrations were above the BMO at well El Rio #5 and at well El Rio #15. Average TDS concentrations were above the BMO at well El Rio #5 yet below the BMO at well El Rio #15. Declining water levels during 2014 have contributed to increasing nitrate and TDS concentrations, compared to those in 2013.

Status Summary Table

State Well Number (name)	Depth (ft)	Nitrate (mg/L)		TDS (mg/L)		5-yr Trend	
		BMO	2014 Ave	BMO	2014 Ave	Nitrate	TDS
02N22W23B02S (El Rio #5)	135-277	22.5	78	1,200	1,338	↑	↑
02N22W23C05S (El Rio #15)	140-310	22.5	25	1,200	1,087	↑	↑



**FOX CANYON GMA BASIN MANAGEMENT OBJECTIVES REPORT CARD
OXNARD PLAIN FOREBAY
2014**

