



Fox Canyon Groundwater Management Agency

Notice of New Irrigation Allowance

July 2013

Inside this issue:

Attention	1
IAI Eto Zones	1
IAI Water Allowances	2
When Do I File?	2
How Did the GMA Create this New System?	2
Stay Tuned	2

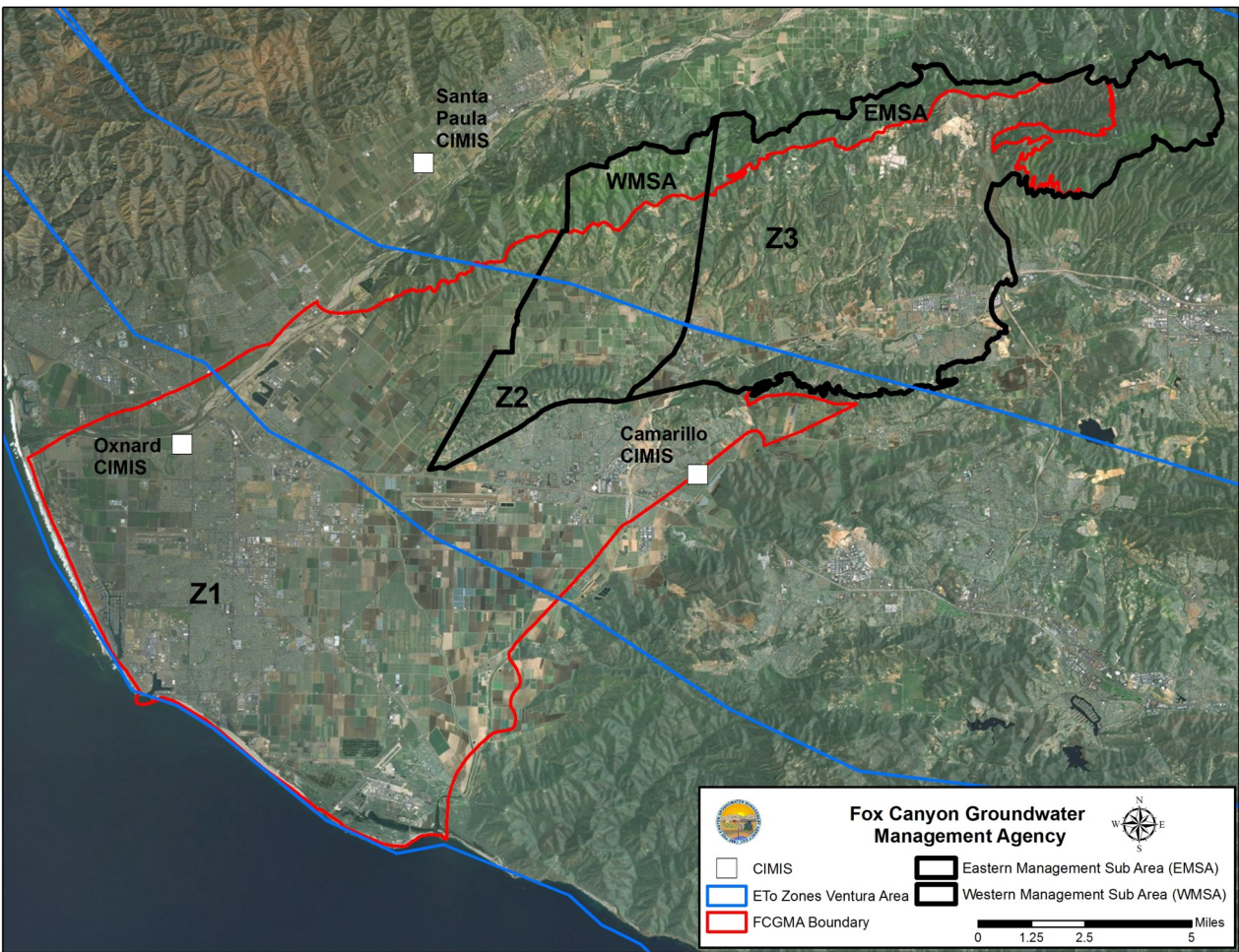
ATTENTION AGRICULTURAL OPERATORS!

The FCGMA now requires Operators, who file for Irrigation Efficiency allocations, to file using the new Irrigation Allowance Index (IAI).
What Does this Mean For You?

In the past, all tree crops, **regardless of age and canopy cover**, received the same water allocation. This resulted in some very odd efficiencies (200% or more). The new Irrigation Allowance Index (IAI) system uses percent ground shading for the allocation and is more appropriate. With the previous system, a grower was limited to a list of 5 GMA crop types; therefore, if a crop type wasn't listed, the grower had to choose the most similar GMA crop type. Now, based on input from grower surveys and workshops, the new IAI system allows the growers to choose from a variety of 23 different crop categories. In addition, the previous system didn't correctly account for multiple crops grown on the same parcels, or for crops not grown year-round. With the IAI system, an Operator can now correctly account for crop rotations. Another advantage to the new IAI system is the ability to determine allocation at the beginning of the year, as opposed to waiting until the end of the year. The IAI provides predictability (a min and max) on January 1st of each year. And finally, the previous system used various weather stations to determine the allowed water. Correct historical weather data, coupled with yearly precipitation data and your Eto zone, helps the Operator arrive at the allowed water in the new IAI system. While we've listed only several advantages here, there is much more the new Irrigation Allowance Index has to offer. Overall, it's a more straight forward, user-friendly system. Please check our website for details and training videos specifically located at www.fcgma.org/videos.html.

IAI Eto Zones

What is the FCGMA Doing to Help Me Learn About the IAI? The Agency encourages you to visit our website at www.fcgma.org to view short tutorials using your computer and/or smart phone. Here, you can view and download background information, as well as instructional slides. You can also find copies of the new IAI forms on our website, along with training materials. Using the training materials, you can easily do a "practice run" with the new paperwork, well in advance of the first required filing. As always, should you have any questions, concerns or comments, you can contact us at (805) 654-2014, or e-mail us at FCGMA@ventura.org.



IAI Water Allowances

What Does this Mean for the FCGMA? It provides the Agency with an efficiency-based allocation that is better at accounting for actual crop water demands.

Annual Irrigation Allowance Index Values (listed in Acre-Feet/Acre)¹

	Oxnard (Z1)			Camarillo (Z2) ²			Santa Paula (Z3) ²		
	Typical	Dry	Wet	Typical	Dry	Wet	Typical	Dry	Wet
Crop Category	Total AF/A	Total AF/A	Total AF/A	Total AF/A	Total AF/A	Total AF/A	Total AF/A	Total AF/A	Total AF/A
Avocado - 20% Ground Shading	1.9	2.0	1.7	2.1	2.3	1.9	2.3	2.5	2.1
Avocado - 50% Ground Shading	2.7	3.0	2.5	3.1	3.4	2.8	3.3	3.7	3.0
Avocado - 70% Ground Shading	3.7	4.1	3.5	4.1	4.6	4.0	4.5	5.1	4.3
Blueberries 20% Ground Shading	1.8	1.9	1.8	2.1	2.3	2.0	2.3	2.5	2.2
Blueberries 50% Ground Shading	2.6	2.7	2.6	3.0	3.1	2.9	3.3	3.4	3.2
Blueberries 70% Ground Shading	3.6	3.8	3.5	4.1	4.3	3.9	4.5	4.7	4.3
Celery - Single Crop	2.0	2.1	1.8	2.2	2.3	2.0	2.4	2.5	2.2
Citrus - 20% Ground Shading	1.9	2.1	1.8	2.1	2.4	2.0	2.3	2.6	2.2
Citrus - 50% Ground Shading	2.5	2.7	2.4	2.9	3.0	2.7	3.1	3.3	2.9
Citrus - 70% Ground Shading	3.4	3.6	3.2	3.9	4.0	3.6	4.3	4.4	3.9
Lima Beans	1.0	1.1	1.0	1.2	1.2	1.2	1.3	1.3	1.3
Misc. Veg Greenhouse - Fall	1.2	1.3	1.1	1.3	1.4	1.2	1.4	1.5	1.3
Misc. Veg Greenhouse - Spr	1.3	1.4	1.2	1.5	1.6	1.4	1.6	1.7	1.6
Misc. Veg Greenhouse - Summer	1.6	1.6	1.6	1.8	1.8	1.8	1.9	1.9	1.9
Misc. Veg Single Crop - Fall	1.4	1.5	1.3	1.5	1.7	1.4	1.6	1.8	1.5
Misc. Veg Single Crop - Spr	1.6	1.7	1.5	1.8	1.9	1.7	1.9	2.1	1.8
Misc. Veg Single Crop - Summer	2.0	2.0	1.9	2.2	2.3	2.2	2.5	2.5	2.4
Nursery (Non-Greenhouse)	4.3	4.5	4.1	4.9	5.1	4.6	5.3	5.6	5.1
Nursery (Greenhouse)	4.5	4.6	4.3	5.1	5.2	4.9	5.6	5.7	5.4
Raspberries - Tunnel	4.3	4.5	4.2	4.9	5.1	4.7	5.4	5.5	5.2
Sod	4.0	4.2	3.9	4.5	4.8	4.4	5.0	5.2	4.8
Strawberries-Main Season	3.1	3.3	2.9	3.4	3.6	3.2	3.7	3.9	3.4
Strawberries-Summer	1.8	1.9	1.8	2.0	2.1	1.9	2.1	2.2	2.0
Tomatoes - Peppers	2.3	2.3	2.2	2.6	2.6	2.5	2.8	2.8	2.7

1) Adopted by FCGMA Board on October 26, 2011

2) If you are a grower in the Las Posas Basin Western Management Sub-Area or Eastern Management Sub-Area, the FCGMA Board of Directors is limiting efficiency allocations to a maximum of 4 acre-feet per acre, per calendar year. Above that, a surcharge will be assessed.

When Do I File?

The new forms will be mailed out in January 2014, with a due date consistent with our usual filing schedule, January –March 2014.

How Did the GMA Create this New System?

The Agency contracted with Dr. Stuart Styles of the Irrigation Training and Research Center, with important input from the University of California Cooperative Extension Dr. Ben Faber, Ventura County Farm Advisors and Dr. Larry Schwankel, Irrigation Specialist. The Agency also held several workshops with growers and Dr. Styles. These workshops and feedback from the growers were of significant value in creating the new system and having it work effectively for all growers.

Stay Tuned!

The Agency is currently working with IT Services to include interactive online IAI forms on the Agency’s website. These interactive forms will allow an Operator to access the new IAI system in a test setting, and practice entering their data for the current year. Stay

FCGMA Board Members:

- Lynn Maulhardt, Chair
- Charlotte Craven, Vice Chair
- Steve Bennett
- David Borchard
- Dr. Michael Kelley

FCGMA Staff Members:

- Jeff Pratt, Executive Officer
- Alberto Boada, Agency Counsel
- Gerhardt Hubner, Deputy Director
- Rick Viergutz, Groundwater Manager
- Kathleen Riedel, Groundwater Specialist
- Jessica Rivera, Staff
- Miranda Nobriga, Clerk of the Board