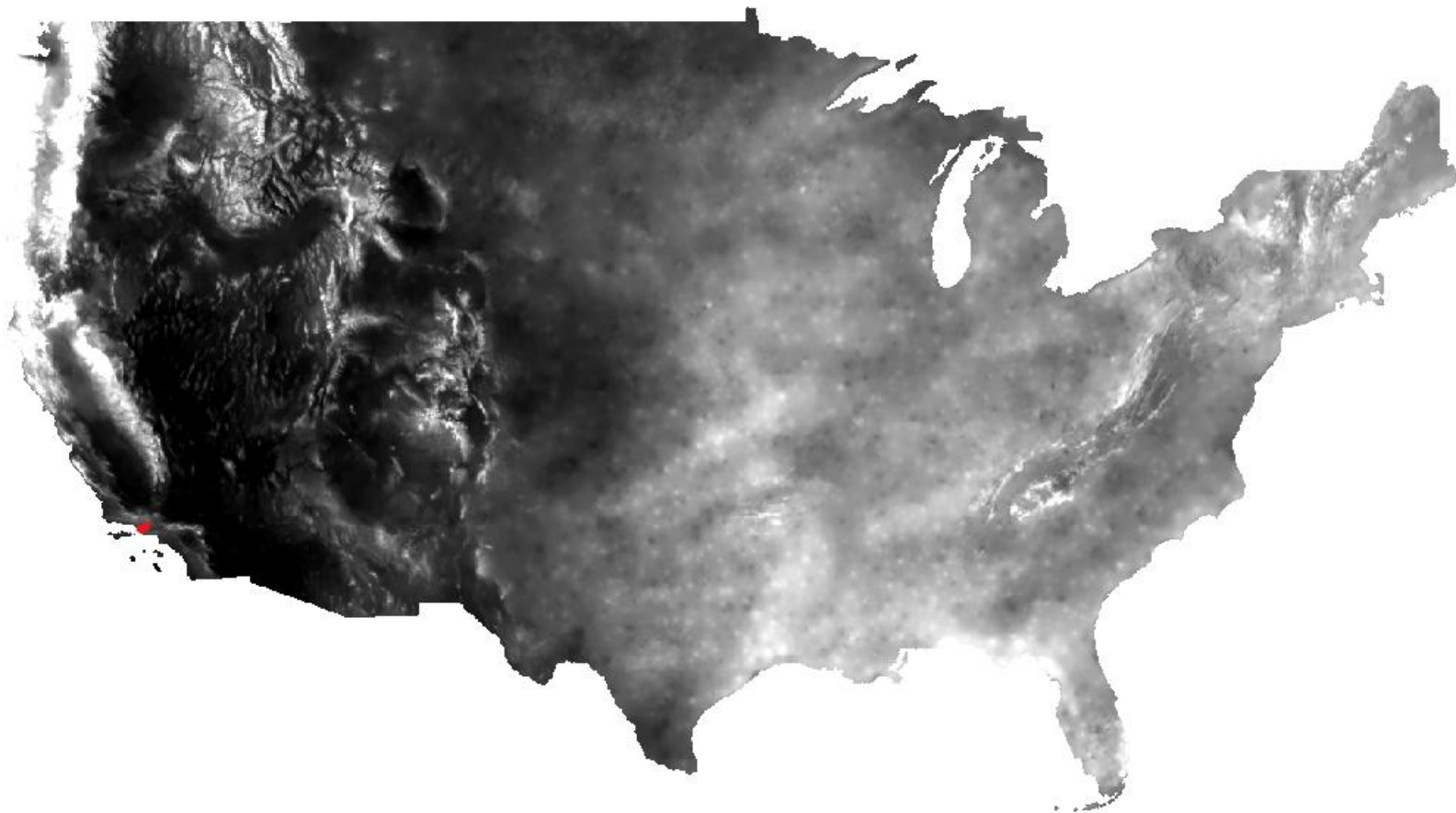


PRISM, October 1986







Polygon	Area (ac)	Water Year 1986 PRISM Precipitation (mm)													Total, ft	Acre-feet
		Oct	Nov	Dec	Jan	Feb	Mar	Apr	May	Jun	Jul	Aug	Sep	Total		
1	25.1	13	104	19	89	238	125	40	0	0	0	0	30	657	2.2	54
2	745	13	101	18	90	224	121	31	0	0	0	0	26	624	2.0	1525
3	3217	12	101	20	85	189	120	34	0	0	0	0	27	588	1.9	6205
4	968	12	101	21	83	187	120	28	0	0	0	0	26	577	1.9	1832
5	422	10	104	23	89	183	124	37	0	0	0	0	26	596	2.0	825
<b>Total</b>	<b>5377</b>															<b>10441</b>

PRISM Calculated by UWCD: 12,492 ac-ft

DPWM in DRAFT DBS&A Report: 9,457 ac-ft (90% of 10,441)

DPWM Corrected for Precip in Cells with Streams: 10,572 ac-ft (101% of 10,441)